



the
**PLAYING
CIRCLE**

SAFETY

How we create a safe environment

SAFE MEETINGS

The health and safety of our guests and our staff is our highest priority. We follow the guidelines as indicated by the Public Health and the Environment (NIPHE/RIVM), and have incorporated these - along with our own strict measures - into standards. By following these guidelines, we can guarantee your health and safety whilst allowing you and your fellow attendees to focus on the content of your meeting. In short, we can ensure a healthy, productive environment.

Summary of our guidelines and rules:

All locations have been adapted according to the 1.5 meter distance rule

Floor markings and signs have been placed to create a safe flow of movement

All locations contain hand sanitisers, disposable paper towels and plastic gloves

Extensive cleaning, before, during and after all meetings

The host is always alert to being fully compliant with the guidelines and rules of the NIPHE, and will brief the guests prior to the meeting

PRIOR

A checklist will be sent to your company contact person. We kindly request our clients read this carefully with special regard to the health of your guests

On arrival it is clearly indicated where you can move in relation to other guests

All our employees and suppliers follow the guidelines of NIPHE

Our caterer, DIS, have been tested on their working methods and follow the protocol as outlined by the NIPHE and Koninklijke Horeca Nederland (representing hospitality businesses in the Netherlands)

Bringing your own catering is permissible, if this is in accordance with the protocol of your business operations

The lift clearly states how many people can enter one at a time

The host will provide a small explanation of the measures taken prior to the meeting, so that everyone is fully aware of any restrictions or limitations

All locations have been adapted to the 1.5 meter safe distance regulations. We have adopted the necessary limitations in all of our spaces and clearly mark out the routes and walkways that maintain the 1.5 meter rule

HYGIENE

The regular cleaning standards before, during and after the meeting have been extended

During a meeting, the (contact) surfaces are regularly cleaned with disinfectants

The host washes hands thoroughly every 30 minutes, or more often if required

The host checks her/his temperature before the meeting

When serving food or drinks, extra measures are taken, such as the use of disposable gloves and a splash mask

We have disposable paper towels at each location (for both personal use and cleaning)

There is a (contactless) thermometer at each location to test the temperature of the guests and/or staff at all times

THE MEETING

A disinfection station is presented in the meeting room, and all guests are obliged to disinfect the hands upon arrival

The disinfection station is available throughout the day, and will be cleaned and replenished frequently

Guests will hang their own coats up upon arrival

We have sufficient inventory of disposable gloves - these are optional

Guests need to oblige to the designated areas, which are indicated by markings and posts

For every setup, we provide water, paper and pens, and a “occupied” plaque

One person at a time is allowed to enter the hallway and/or toilet. The “occupied” plaque is used to hang outside of the hallway entry

It is visually clear for all when the hallway and/or toilet is occupied

CATERING

The host maintains 1.5 meter distance, and uses a fresh pair of gloves during the preparation and serving of all catering

Our caterer (DIS) and suppliers all comply with the guidelines by the Dutch government (RIVM) and Koninklijke Horeca Nederland (representing hospitality businesses in the Netherlands)

Bringing your own catering is permissible, if this is in accordance with the protocol of your business operations

Warm beverages are prepared by the host in a designated, shielded area. The beverage is placed down, and can be picked up by the guest once the host has taken a step back



SAFETY

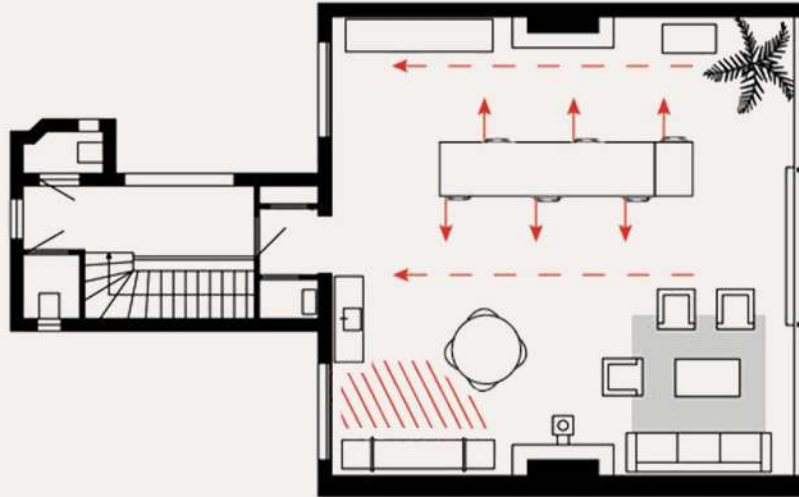
How we create a safe environment



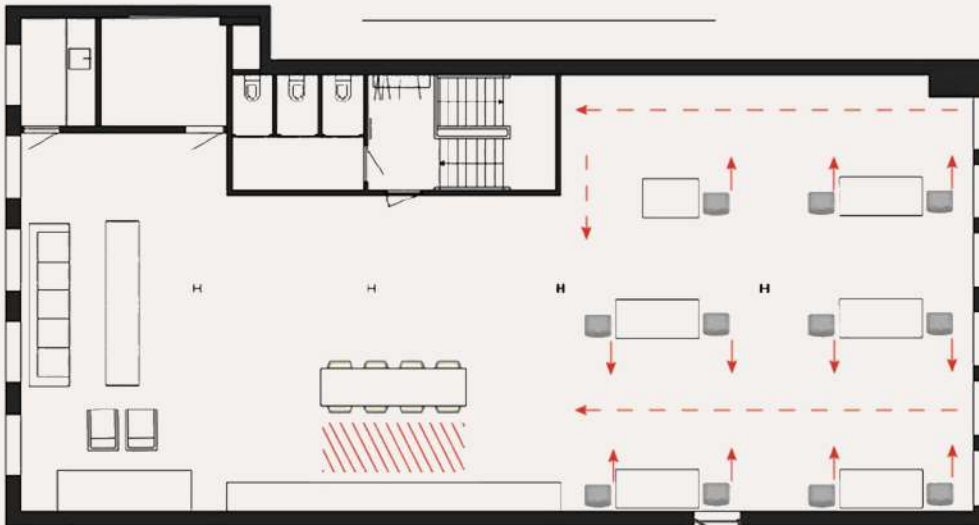
ROUTING EXAMPLES

All our setups have been adjusted to ensure that the 1.5 meter distance can be maintained at all times

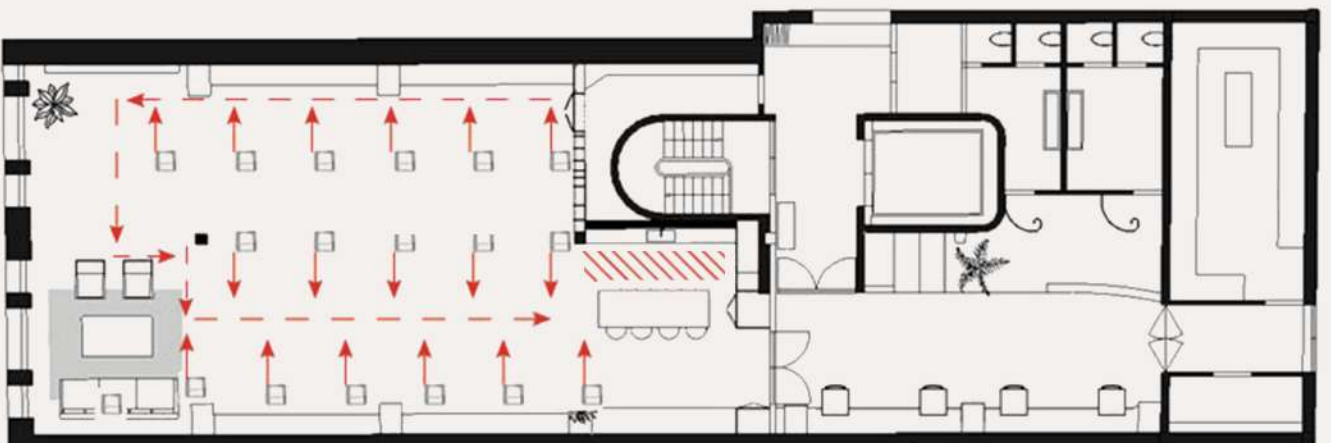
VAUDEVILLE THEATRE



ATELIER THE VIJZEL



CRISTOFORI CONCERT HALL



the
PLAYING
CIRCLE